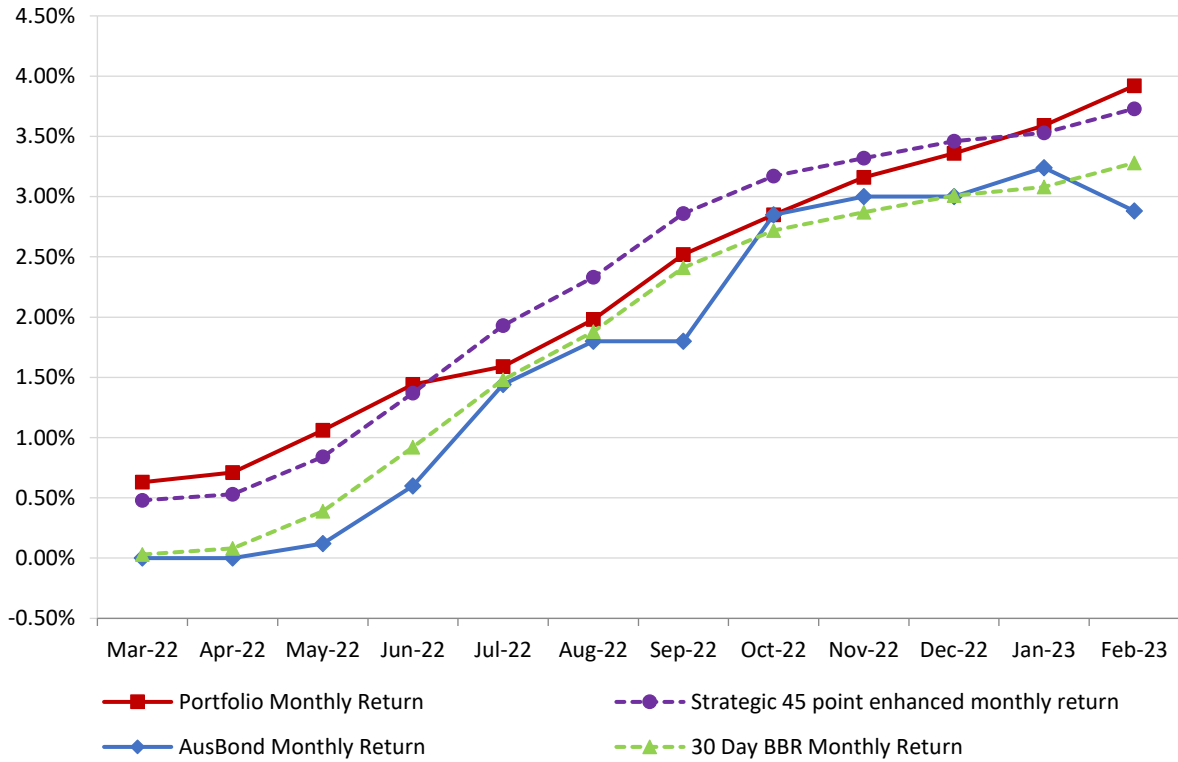


Attachment B

**Investment Performance
as at 28 February 2023**

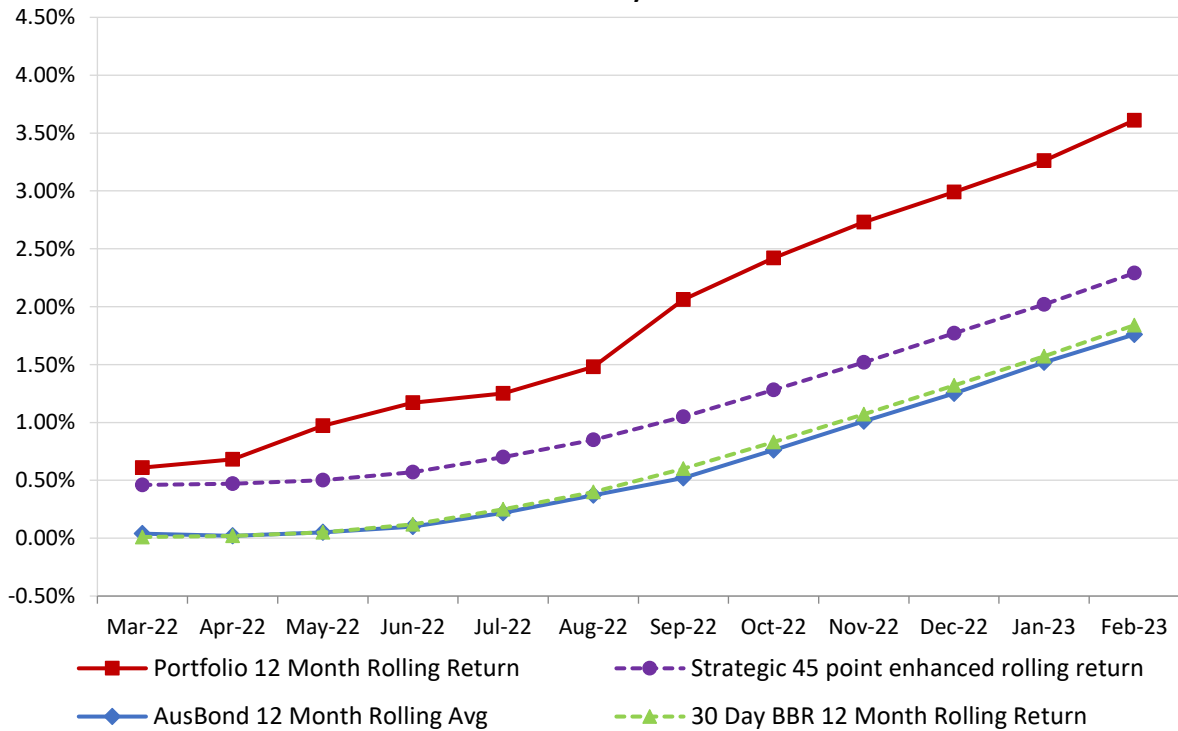
Monthly Results

Actual Portfolio vs Strategic Enhanced Benchmark vs AusBond Benchmark vs 30 Day BBR Benchmark
February 2023

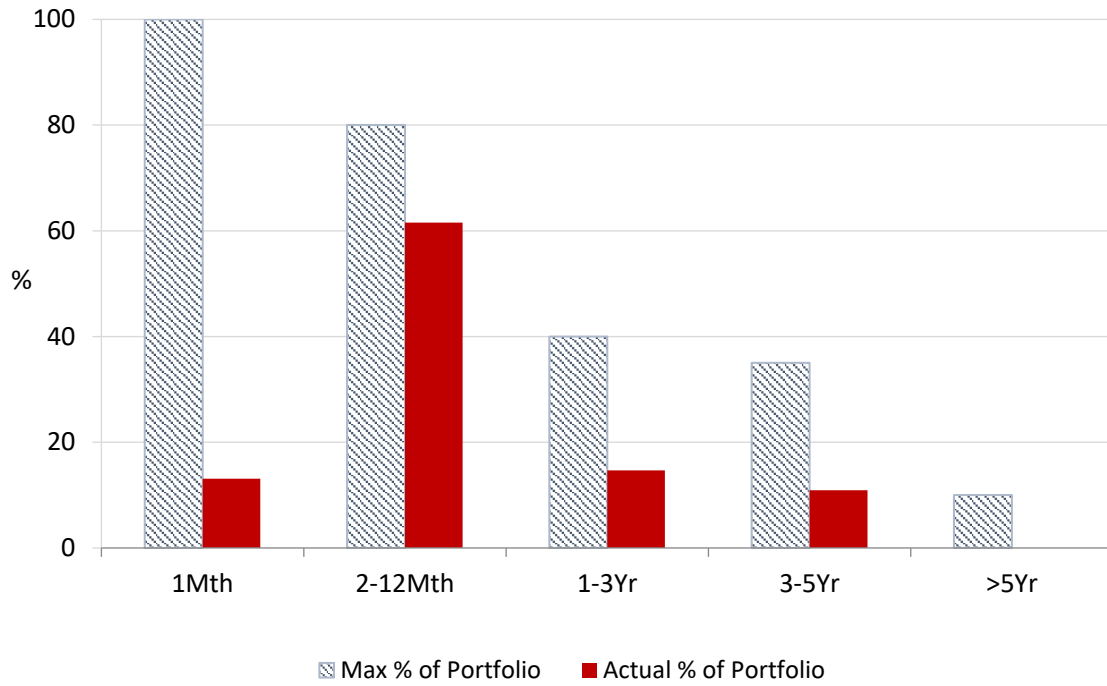


12 Month Rolling Averages

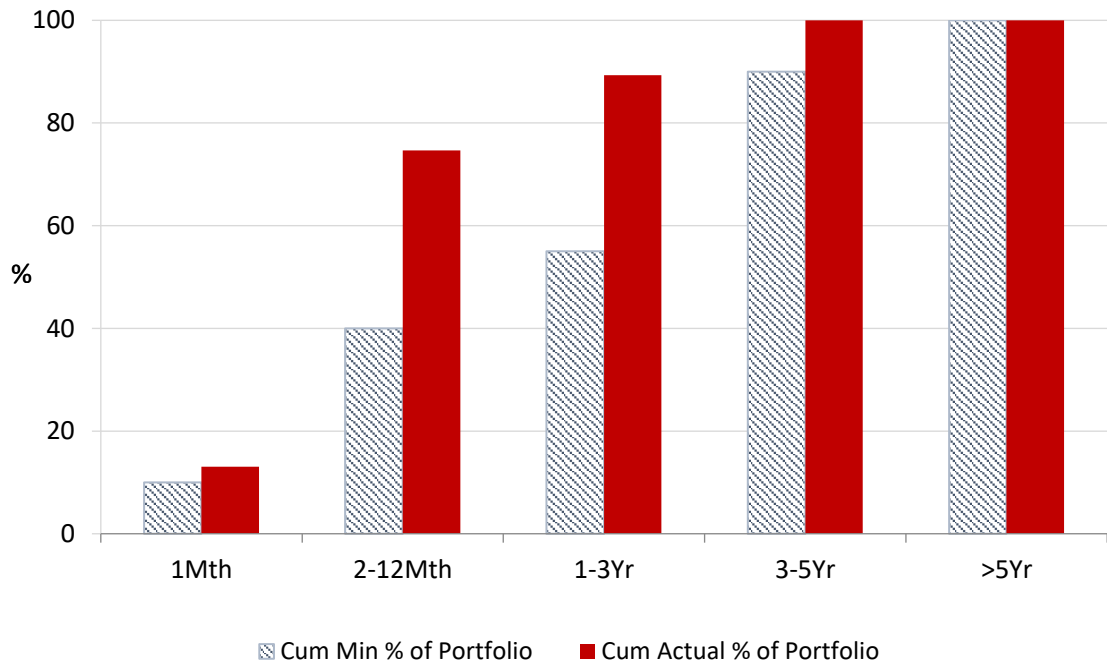
Actual Portfolio vs Strategic Enhanced Benchmark vs AusBond Benchmark vs 30 Day BBR Benchmark
February 2023



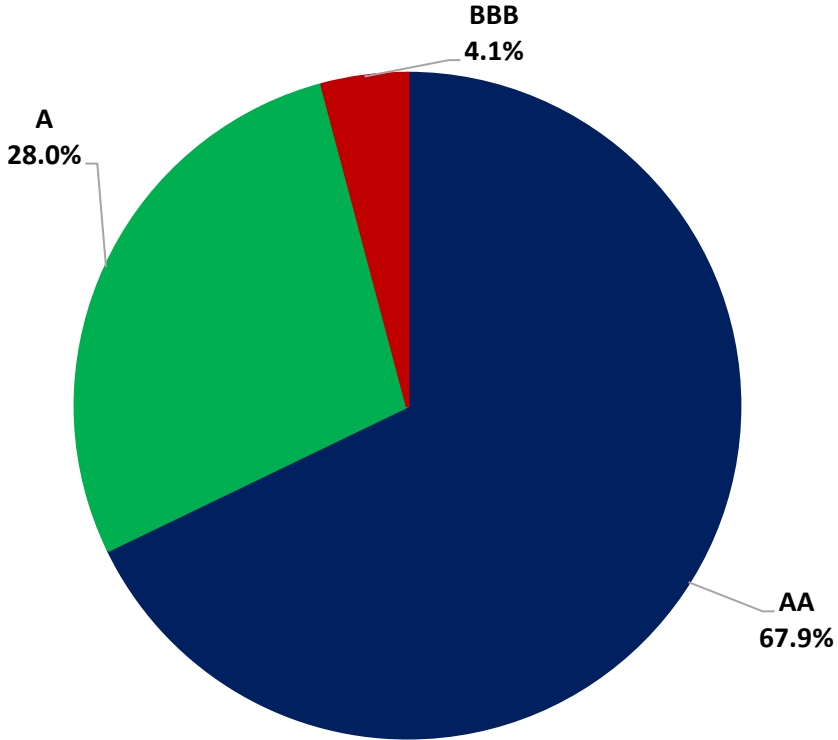
Portfolio Liquidity - Maximum Allowances as at 28 February 2023



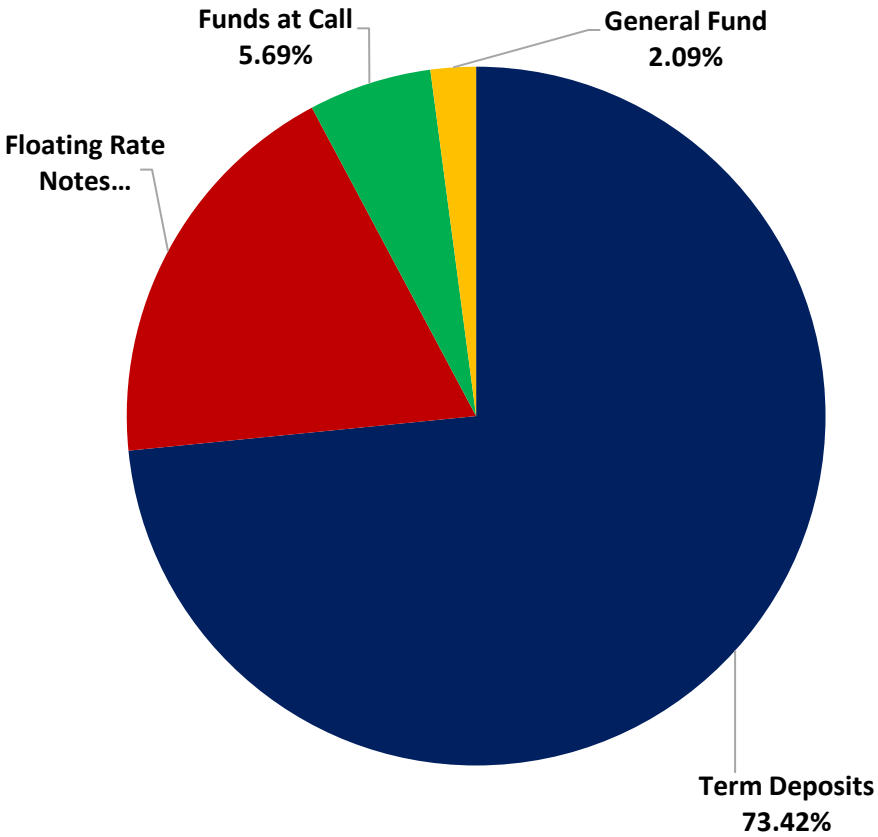
Portfolio Liquidity - Minimum Allocations as at 28 February 2023



Risk Profile as at 28 February 2023



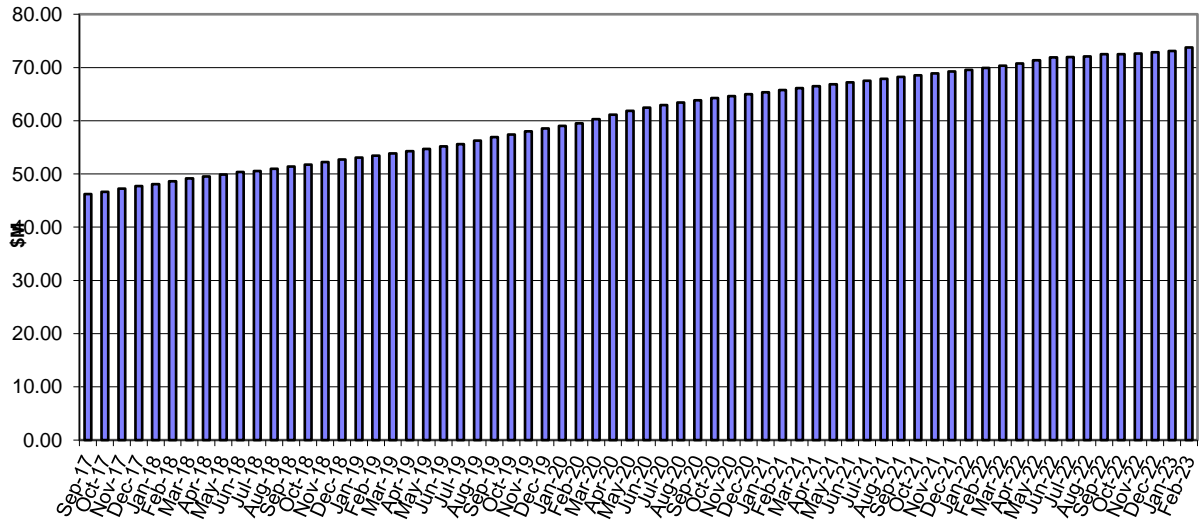
Risk Profile as at 28 February 2023



INVESTMENT AND CASH DISTRIBUTION BY FINANCIAL INSTITUTION
as at 28 February 2023

Institution Category	Financial Institution	Amount \$M	Financial Inst. %	Institution Cat. %
Australian Big 4 Bank (and related institutions)	ANZ Bank	22.0	2.9	
	Commonwealth Bank	234.8	31.1	
	National Aust Bank	48.9	6.5	
	Westpac Banking Corporation	192.7	25.5	
Big 4 Total		498.4		65.9
Other Australian ADIs and Australian subsidiaries of foreign institutions	Bank Australia Limited	10.0	1.3	
	Bank of Queensland	43.0	5.7	
	Bendigo & Adelaide Bank	40.0	5.3	
	Great Southern Bank (formerly Credit Union Australia)	6.5	0.9	
	ING Bank	75.0	9.9	
	Suncorp Bank	56.3	7.4	
	Macquarie Bank Ltd	10.0	1.3	
	Northern Territory Treasury Corporation	9.5	1.3	
Newcastle Permanent Building Society	7.3	1.0		
Other ADI Total		257.5		34.1
Grand Total		755.9	100.0	100.0

Cumulative Outperformance over AusBond Benchmark - 2016-2022



Cumulative Outperformance over 30 Day BBR Benchmark - 2016-2022

